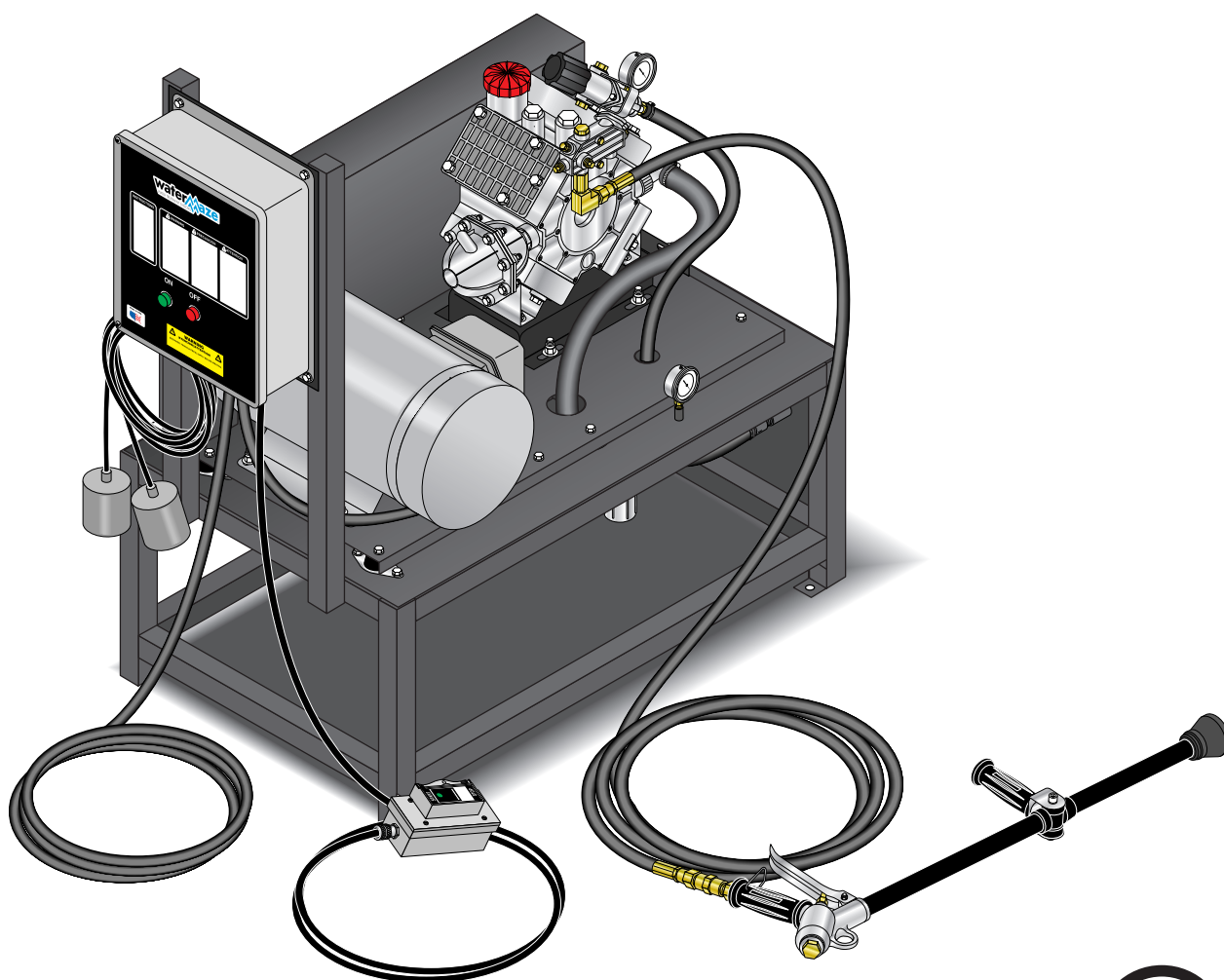


OPERATOR'S MANUAL

1.103-472.0 (460V)

1.103-484.0 (230V)



For technical assistance or the Water Maze Dealer nearest you
consult our web page at www.wmaze.com

CONTENTS

Introduction 3

Unpacking..... 3

Important Safety Information 3

Installation..... 3

Pipe Connections..... 3-4

Float Level Controls..... 4

Remote 4

Electrical 4

Start-Up 4, 6

Component Identification and Installation..... 5

30-765 Exploded View & Parts List - Water Blaster..... 7-9

Diaphragm Pump Parts Breakdown, #8.715-292.0 10

Troubleshooting Guide 11-12

Specifications..... 13

Warranty 14

Model Number _____

Serial Number _____

Date of Purchase _____

The model and serial numbers will be found on a decal attached to the machine. You should record both serial number and date of purchase and keep in a safe place for future reference.

INTRODUCTION

Thank you for purchasing a *WATER MAZE*.

This manual covers the operation and maintenance of the *WATER MAZE* Water Blaster. All information in this manual is based on the latest product information available at the time of printing.

WATER MAZE, Inc. reserves the right to make changes at any time without incurring any obligation.

Owner/User Responsibility:

The owner and/or user must have an understanding of the manufacturer's operating instructions and warnings before using this *WATER MAZE* machine. Warning information should be emphasized and understood. If the operator is not fluent in English, the manufacturer's instructions and warnings shall be read to and discussed with the operator in the operator's native language by the purchaser/owner, making sure that the operator comprehends its contents.

Owner and/or user must study and maintain for future reference the manufacturers' instructions.

This manual should be considered a permanent part of the machine and should remain with it if machine is resold.

When ordering parts, please specify model and serial number.

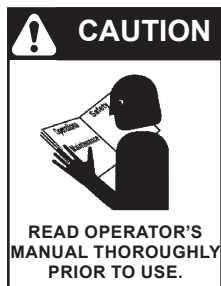
UNPACKING

Water Blaster Model 30-765

Water Blaster Assembly (pre-assembled)

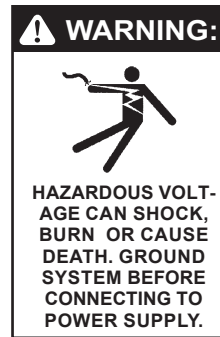
- Wand with spray gun
- Hose 3/4" x 100' (1-1/8" OD, 1250 PSI)
- N/O and N/C floats
- Remote switch
- Manually operated hose reel only (Optional #4-02780008 for 30-765. 1" inlet and outlet and 3/4" FT x 1" MT adapter needed)

IMPORTANT SAFETY INFORMATION



CAUTION: To reduce the risk of injury, read operating instructions carefully before using.

1. Read the owner's manual thoroughly. Failure to follow instructions could cause a malfunction of the machine and result in death, serious bodily injury and/or property damage.



WARNING: Meet the National Electrical Code and local codes for all wiring.

2. The installation of the machine must comply with local and/or national codes.

WARNING: All wiring must be performed by a qualified electrician.

WARNING: Ground system before connecting to the power supply.

3. Do not spray water near electrical components.
4. Never make adjustments on the machine while it is in operation except those prescribed in this manual.
5. Before servicing the machine, refer to the MSDS on all of the material identified in the waste stream. You must comply with all warnings and wear all protective clothing stated on the MSDS.
6. Be certain coupled hoses have been locked before operating.
7. Inlet water temperature must not exceed 120°F.
8. When making repairs disconnect machine from electrical source.
9. The best insurance against an accident is precaution and knowledge of the equipment.
10. *WATER MAZE*, Inc., is not liable for any modifications or the use of components not purchased from *WATER MAZE*.
11. Components will freeze and must be located in a heated enclosure in cold climates.

INSTALLATION

Location

The machine must be placed on a firm surface. No special pad is required. The machine must be protected from freezing and water spray. The Water Blaster should be placed near holding tank and sump pit. Bolt Water Blaster to floor using vibration isolators between Water Blaster and floor.

Component Identification

All components are visible and easy to identify. Take a minute to become familiar with the Water Blaster (See Component Identification Illustration on page 5).

Pipe Connections

Water Blaster Model 30-765

The Water Blaster needs to be gravity fed from a holding tank (not supplied), see page 5. Use 1-1/2" pipe or hose (not supplied) from holding tank to inlet hole of Water Blaster, see page 7, and attach to inlet strainer. If using pipe, the last 3 feet going into the strainer must be hose.

The Water Blaster inlet hose needs to be placed above the bottom of the holding tank to help prevent solids from plugging up inlet strainer. The black N/O float needs to be positioned above the inlet hose bulk head, going into tank, to prevent the pump from running dry. An elbow inside the tank on the suction line is recommended to keep floating solids from being sucked up. Keep the inlet from the pit, return line or fresh water lines away from the inlet of the suction hose to prevent cavitation. Do not direct feed pump.

Attach bypass hose (not supplied) to 3/4" female threaded fitting labeled "return" just to the left of the inlet hole. If you are going to run pipe for your return line have 5-6' of 3/4" hose between the frame of Water Blaster and your pipe. Run return line back to collection pit. Attach garden hose (not supplied) to fresh water inlet fitting. Attach fresh water return line (not provided) between the fresh water inlet and the inlet suction line. Run line to feed tank.

Float Level Controls

There are two float controls. Float #1 is normally closed and adds fresh water when the water level gets too low. Locate this float towards the middle of the sump. Float #2, normally open, turns the pump off when the water level gets extremely low. See page 5 for Water Blaster float location.

The wires for both floats should be run through conduit from sump to Water Blaster Electrical Box (see page 7) by a qualified electrician following local codes.

Remote

The *WATER MAZE* Water Blaster comes with a remote control. The remote is pre-wired.

If the remote is not needed, the electrical system must be closed to make it operate. Place a jumper wire from Block 1 to Block 2 and another jumper wire from Block 3 to Block 4. This will create a closed circuit when the start button is pushed.

Electrical

This machine, when installed, must be electrically grounded in accordance with local and/or national codes. Check for proper voltage using a volt meter. It is recommended that a Ground Fault Circuit Interrupter be installed in the circuit breaker for all *WATER MAZE* equipment.

NOTE: Always test all electrical outlets for proper voltage before plugging in any equipment. See specifications page for voltage and amperage requirements.

START UP

Start Up Check List

	YES	NO
Suction hose connected?	_____	_____
Discharge hose connected?	_____	_____
Reject or bypass water hose connected?	_____	_____
Fresh water hose connected?	_____	_____
Control floats #1 and #2 connected?	_____	_____
Correct power supply?	_____	_____

Water Blaster Model 30-765

Clean inlet filter.

Make sure oil in pump is filled to mark on sight glass.

Make sure relief valve handle is in down position. Back off relief valve pressure knob.

Set Multi-Function Timer to 5 seconds.

Depress the ON button to start the motor and drive pump.

Wait a few seconds for pump to prime.

Move relief valve handle to up position.

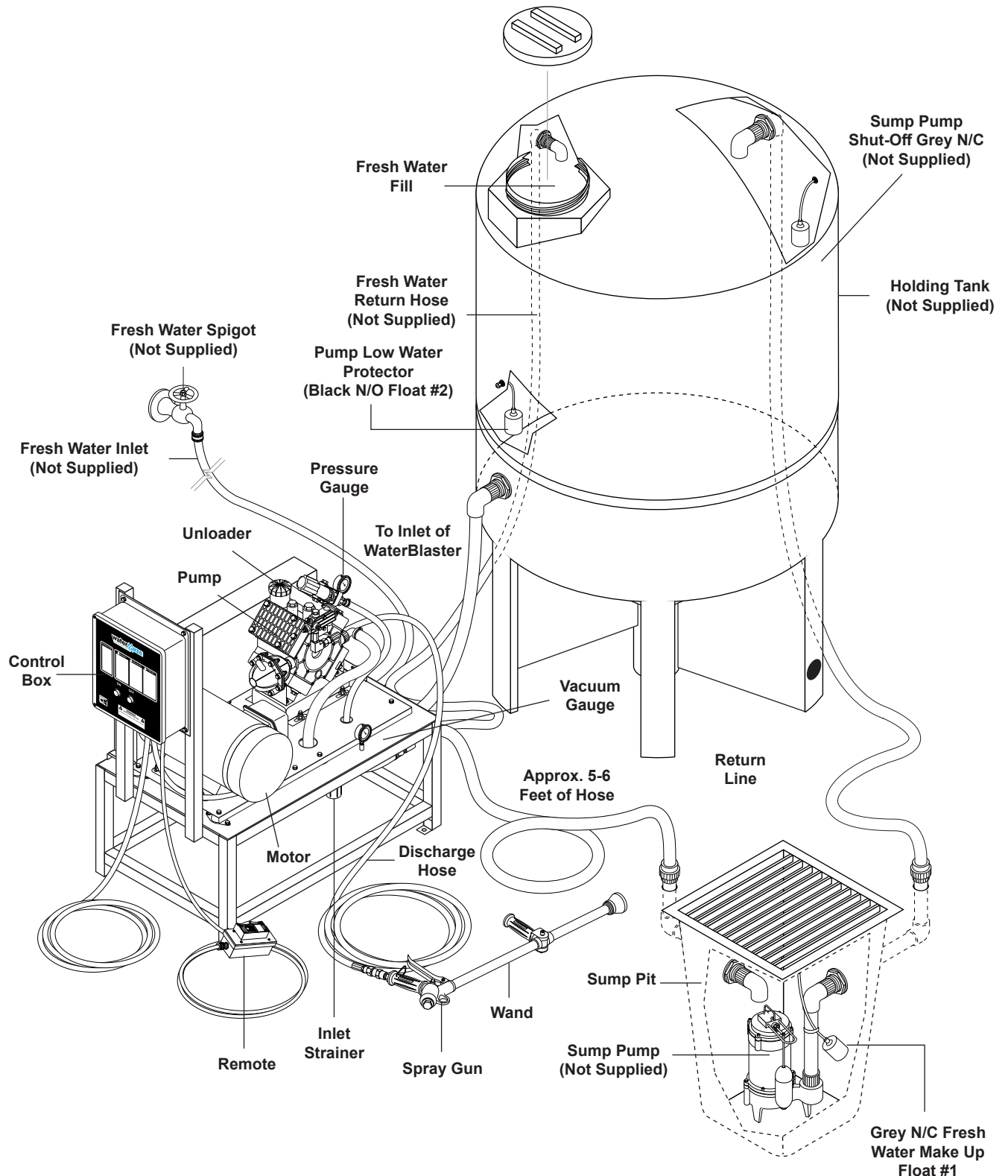
Adjust relief valve while spraying gun. Pressure should read 500 psi while spraying or 600-650 psi in bypass mode.

Vacuum gauge should read between 6-8, If vacuum exceeds 10", a vacuum switch will turn off unit. The inlet filter should be cleaned and the unit restarted. **Note: If filter is clean, check downstream for blockage.**

The system is now operational.

Do not run pump without water.

WATER BLASTER COMPONENT IDENTIFICATION AND INSTALLATION



PUMP MAINTENANCE

Water Blaster Model 30-765

1. **AFTER EACH USE** flush pump with clean water. Most diaphragm “attacks” occur when chemicals are left sitting in the pump. These few minutes of cleaning are well spent, extending diaphragm life and minimizing chemical buildup throughout the system.
2. **AFTER EVERY 500 HOURS OF USE OR AT SEASON’S END** (whichever comes first), install a new set of diaphragms. Inspect check valves for spring fatigue and seat wear. Change oil using a **non-detergent 30 or 40 weight oil**: hand rotate shaft while filling. This evacuates most unwanted air pockets. Run pump five minutes under “**no-load**” conditions. This evacuates remaining air pockets from diaphragm cavity. **Recheck** oil level.

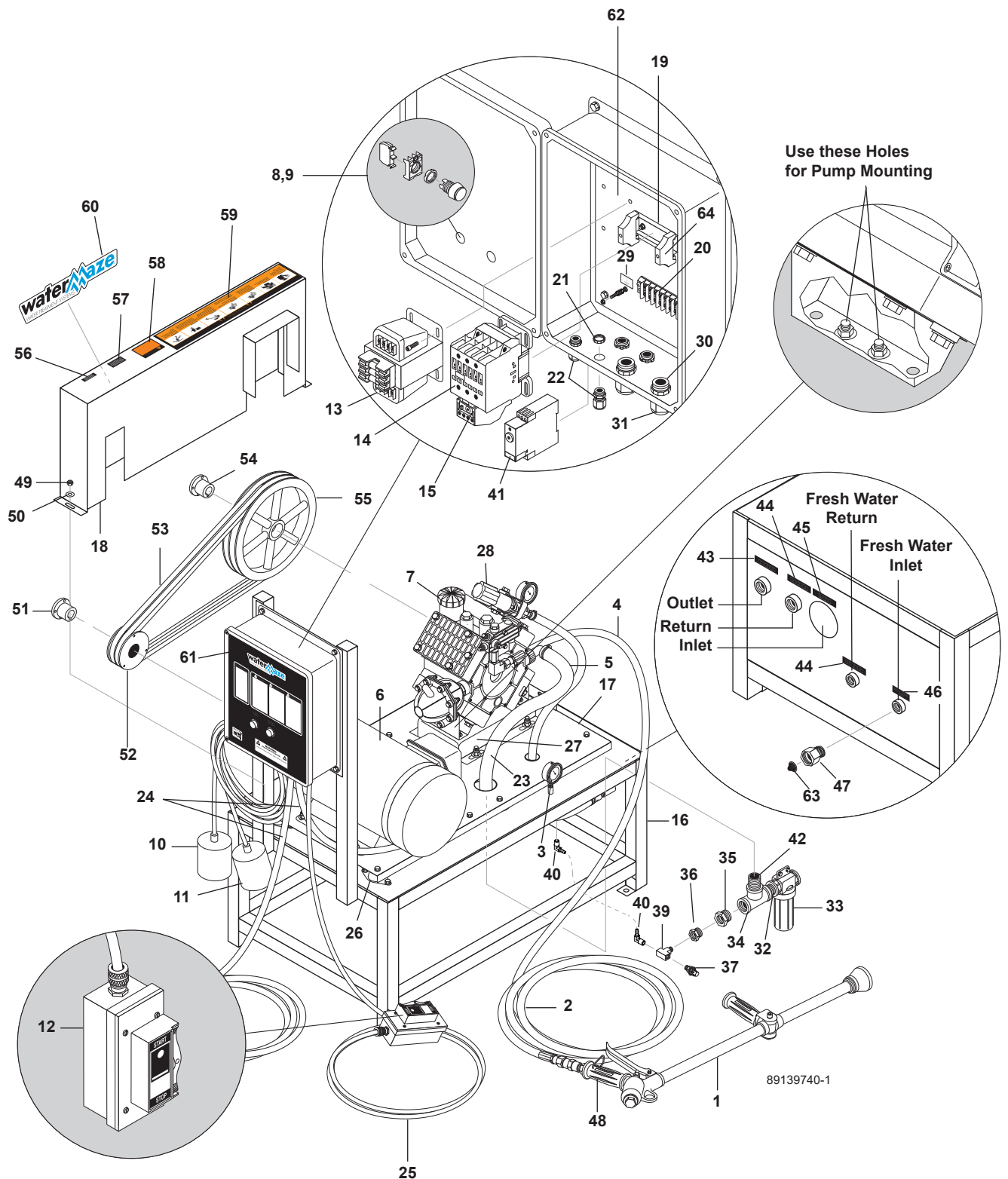
3. **WINTER STORAGE** perform step 1 (above), then, with tank empty and suction and discharge valves “**open**,” run pump one minute to ensure complete drainage of pump heads and lines. Recirculate antifreeze and leave in system to complete winterizing procedure.

NOTE: Allow antifreeze to replace any possible water in hoses and booms. If a spray gun is in the system, run antifreeze through the hose and spray gun into the tank lid opening to clear and/or dilute water. (Depending on the length of hose, more than one gallon of antifreeze may be required to protect the system from freezing.)

4. Once a week check air pressure on pulsation dampener. With machine off you should have 100 psi.

NOTE: TO PROTECT AGAINST SERIOUS INJURY, NEVER SPRAY FLAMMABLE LIQUIDS, OR FLUSH PUMP WITH FLAMMABLE LIQUIDS! THIS WILL VOID ANY AND ALL WARRANTIES.

WATER BLASTER EXPLODED VIEW #30-765



WATER BLASTER EXPLODED VIEW PARTS LIST

ITEM QTY	PART NO.	DESCRIPTION
1	8.711-343.0	Wand w/Spray Gun, 21" Barrel, #5MM Nozzle 1
2	8.711-716.0	Hose, 3/4" x 100', High Press, MPT x Male Swivel 1
3	8.712-143.0	Gauge, Vacuum, 30" HG to 30 PSI 1
4	9.802-261.0	Hose, 3/4", Push-on 3 ft.
5	8.711-819.0	Hose, 1-1/2" Clear Spiralite 3.25 ft.
6	8.759-071.0	Motor, 10HP 3PH 230/460VF1 1760RPM 213/5T 1
7	8.715-292.0	Pump, Udor, Diaphragm w/Control Unit, DELTA-100/C 1
8	9.803-974.0	Switch, Green, PB 1
	9.803-973.0	Switch, Red, PB 1
9	9.802-534.0	Block, Contact N/C 1
	9.802-535.0	Block, Contact N/O 1
10	8.716-142.0	Switch, Float, N/O, .20PMDWOP, 1003825 (Black) 1
11	8.716-143.0	Switch, Float, N/C #31003826 (Gray) 1
12	8.716-720.0	Switch, On/Off, Remote for Separator 1
13	9.802-551.0	Transformer, 240/480-120V .050KVA 1
	8.716-173.0	* Fuse, Secondary 1
	8.933-007.0	Fuse, Primary (1.103-484.0) 2
	9.802-462.0	Fuse, Primary (1.103-472.0) 2
14	8.724-276.0	Contactor, 40 Amp (1.103-484.0) 1
	8.724-272.0	Contactor, 30 Amp (1.103-472.0) 1
15	8.724-306.0	Overload, 24.0-40.0 (1.103-484.0) 1
	8.724-304.0	Overload 16.0-24.0 (1.103-472.0) 1
16	8.913-341.0	Assy, Frame, Water Blaster 1
17	8.913-346.0	Power Platform Assy 1
18	8.913-343.0	Assy, Belt Guard 1
19	9.802-457.0	Din Rail, 35 mm 4"
20	9.802-492.0	Block, Terminal, 8 Pole 1
21	9.802-525.0	Locknut, 3/4" Conduit (1.103-484.0, 1.103-472.0) 4

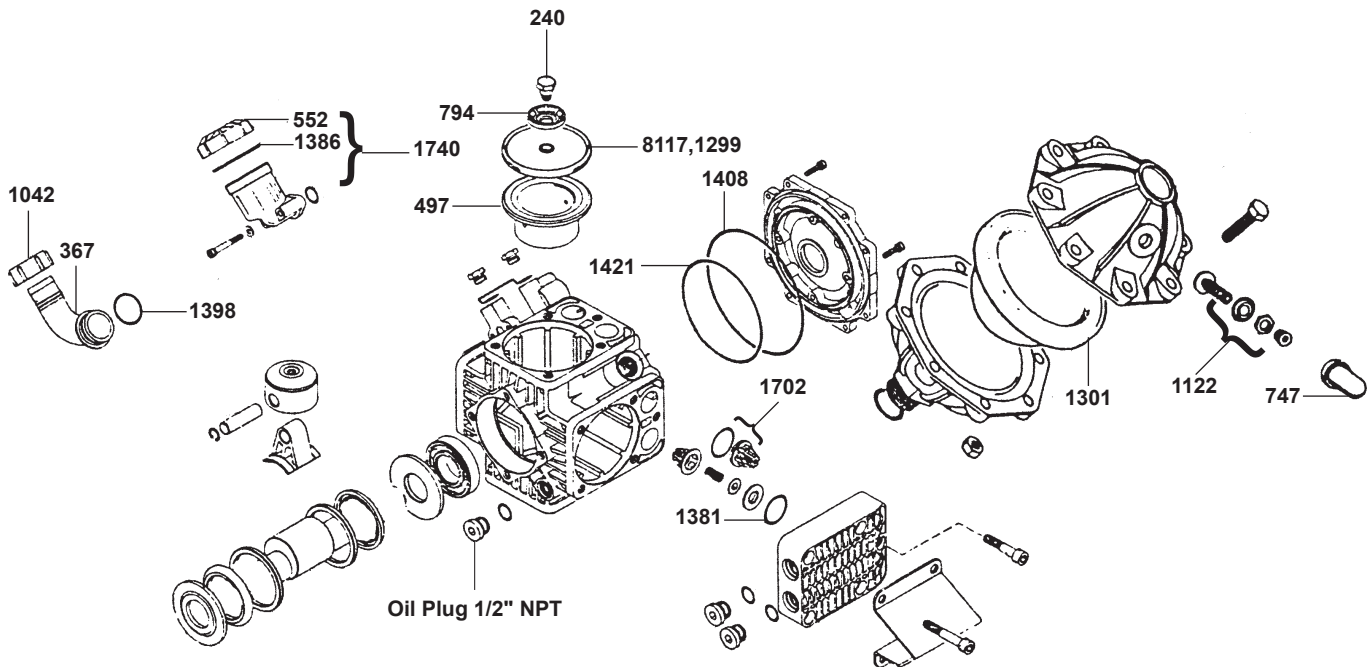
ITEM QTY	PART NO.	DESCRIPTION
22	9.802-514.0	Strain Relief, STRT, LQ TITE 3200, Sm 5
23	9.802-522.0	Strain Relief, Motor, 1" (1.103-484.0, 1.103-472.0) 1
24	9.802-426.0	Cord, Service, SEOW-A, 8/4 Black (1.103-484.0) 25 ft.
	9.802-429.0	Cord, Service, SEO, 12/4, Coleman (1.103-472.0) 25 ft.
25	9.802-423.0	Cord, Service, SEO, 16/3, Coleman 15 ft.
26	9.802-057.0	Isolator, Vibration MNT, 100 LB 8
27	8.913-344.0	Assy, Bracket, Pump 1
28	8.715-513.0	Unloader 1
29	8.758-327.0	Label, Ground Symbol 1
30	9.802-523.0	Locknut, 3/4" Conduit, (1.103-484.0) 2
31	9.802-518.0	Strain Relief, STRT LQ TITE, Large (1.103-472.0) 2
	9.802-521.0	Strain Relief, 3/4" Water TITE (1.103-484.0) 2
32	8.706-014.0	Nipple, 1-1/2" Close, Black Pipe 1
33	8.707-089.0	Strainer, 1-1/2" 16 Mesh, SS 1
34	8.706-219.0	Tee, 1-1/2" Female, Pipe, Black 1
35	8.706-045.0	Bushing, 1-1/2" x 3/4", Brass 1
36	8.757-948.0	Bushing Brass 3/4 NPTF(M) x 1/4 NPTF(F) 1
37	8.716-149.0	Switch, Vacuum, 10HG 1
	8.716-150.0	* Boot, Vacuum Switch 1
38	9.802-254.0	* Hose, 1/4" Push-On, /FT 1
39	8.757-871.0	Tee Brass Branch 1/4 NPTF 1
40	8.706-958.0	Hose Barb, 1/4" Barb x 1/4" M-NPTF, 90 degrees 2
41	8.751-306.0	Timer, Multi-Function, 24V-120/240V 5A 1
42	8.706-589.0	Adapter, 1-1/2" MPT x 1-1/2" Hose Barb, Poly 1
43	8.758-396.0	Label, Outlet 1
44	8.758-552.0	Label, Return 2
45	8.758-528.0	Label, Inlet 1
46	8.758-685.0	Label, Freshwater Inlet Evaporator 1
47	8.757-901.0	Adapter Brass 1/2 NPTF (M) x 3/4 GHM 1
48	8.707-007.0	Swivel, 1/2" 1

WATER BLASTER EXPLODED VIEW (CONT).

#30-765 PARTS LIST

ITEM QTY	PART NO.	DESCRIPTION	
49	9.802-779.0	Nut, 3/8 ESNA	2
50	9.802-807.0	Washer, 3/8	2
51	8.715-650.0	Bushing, P1 x 1-3/8" x 5/16"	1
52	8.715-597.0	Pulley, 2TB36	1
53	8.715-713.0	Belt, BX68	2
54	8.715-638.0	Bushing, HX 1-3/8 6B Spline	1
55	8.715-596.0	Pulley, 2 BK130	1
56	8.758-551.0	Label, Equipment Operated By Trained	1
57	8.758-577.0	Label, Relieve Pressure	1
58	8.758-329.0	Label, Warning Exposed Pulleys	1
59	8.758-618.0	Label, Warnings	1
60	8.758-515.0	Label, Watermaze Logo Small	1
61	8.758-676.0	Label, Control Panel Water Maze	1
62	8.920-278.0	Plate, Mount Control panel	1
63	9.804-016.0	Filter Screen Washer, Garden Hose/30Mesh	1
64	9.804-595.0	End Bracket, Entrelec, 103-002-26	2

* Not Shown

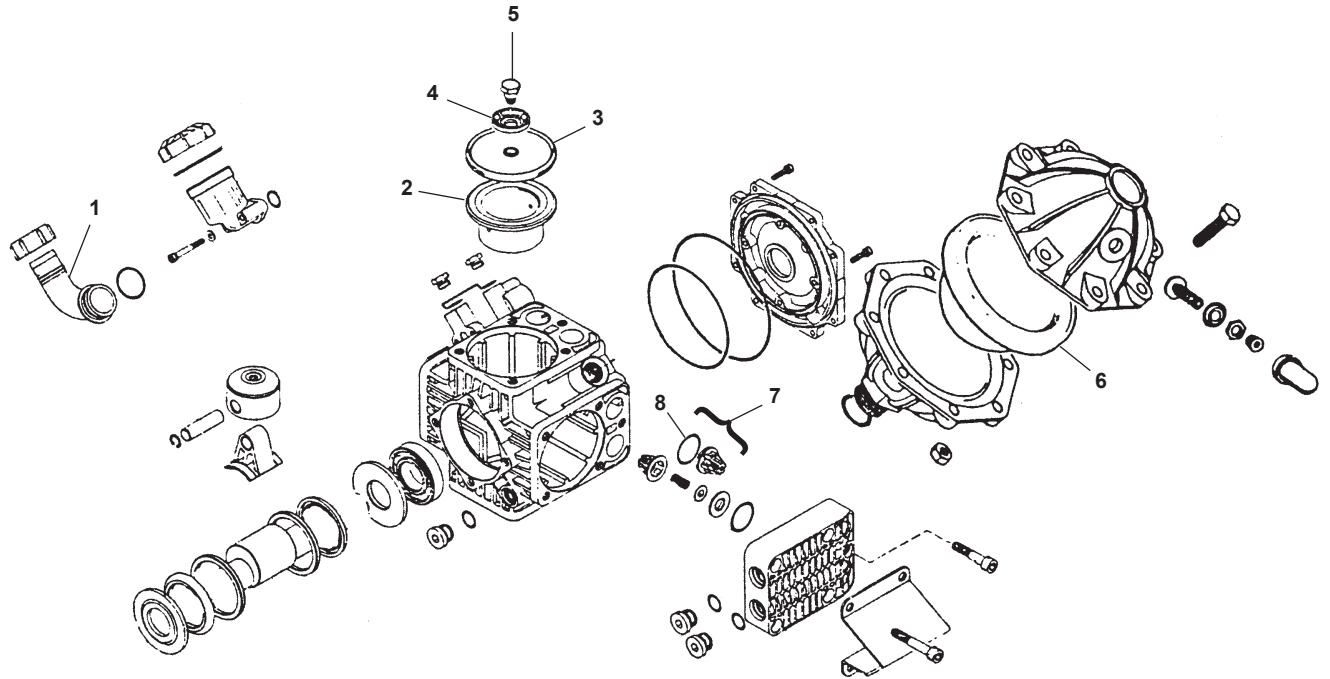
WATER BLASTER DIAPHRAGM PUMP #8.715-292.0 UDOR KAPPA

ITEM QTY	PART NO.	DESCRIPTION
240	71-0102.04	Diaphragm Bolt
367	71-0202.48	Suction Elbow
497	71-0206.24	Piston Sleeve
552	71-0208.07	Oil Reserve Cap
747	71-0218.01	Air Valve Cap Protector
794	71-0301.14	Retainer Washer
1042	71-0604.25	Suction Nut
1122	71-0608.15	Air Valve Assembly
1299	71-0903.13	Piston Diaphragm
1301*	71-0903.16	Accumulator Diaphragm

ITEM QTY	PART NO.	DESCRIPTION
1381*	71-1101.27	O-Ring
1386	71-1101.33	O-Ring
1398	71-1101.42	O-Ring
1408	71-1101.63	O-Ring
1421	71-1101.88	O-Ring
1702	71-6006.01	Valve Assembly
1740	71-6033.01	Oil Reservoir
8117*	71-0903.38	DESMOPAN Piston Diaphragm 4
*	71-8700.24	Diaphragm Repair Kit

* Items are part of Kit 71-8700.24
30-40 Wt. Non-Detergent Oil
40 oz. of Oil

WATER BLASTER DIAPHRAGM PUMP #8.715-292.0 DELTA



ITEM QTY	PART NO.	DESCRIPTION	
1	8.754-361.0	Hose Barb Elbow Delta Pump	1
2	8.754-356.0	Piston Sleeve, K75/100	1
3	8.754-359.0	Piston Diaphragm Delta Pump	4
4	8.754-357.0	Diaphragm Washer Delta Pump	4
5	8.754-355.0	Diaphragm Bolt Delta Pump	4
6	8.754-358.0	Accumulator, Diaphragm	1
7	8.754-362.0	Valve Kit, Delta Pump Kit 647	8

ITEM QTY	PART NO.	DESCRIPTION	
8	8.754-360.0	O-Ring Delta Pump	8
9	8.754-363.0	Diaphragm & Seal Kit Includes Qty 1 of #6, Qty 4 of #3 Qty of 8 of #8	
10	8.754-364.0	* Diaphragm Kit, Delta Kit K100 * Includes the following: Qty 1 of kit #9, Qty 4 of #4 Qty 4 of 5, Qty 8 of #7	

TROUBLESHOOTING

Motor Won't Start

1. Check for improper or loose connections, open switches or relays, blown circuit breakers or fuses.
2. Manually check rotation of motor shaft for free movement and lack of obstruction.

Motor Cuts Out — Check for:

1. Wiring, loose connections, etc.
2. Low voltage at motor (often caused by undersized wiring).
3. Binding and overload (amperage reading).

NOTE: Your pump motor is equipped with automatic thermal overload protection. Under normal conditions, the motor will automatically shut-off before heat damage build-up can occur, caused by an improper operating condition.

Pump Won't Prime

1. Make sure all discharge valves are open and unobstructed and that water level is above suction screen. Check for blockage.
2. Block off suction as close as possible and determine if pump will develop a vacuum.
 - a. If pump does not develop a vacuum and pump has sufficient "priming water":
 1. Tighten all bolts and fittings on suction side.
 2. Check voltage to make sure pump is up to speed.
 3. Open pump and check for clogging or obstruction.
 - b. If pump develops a vacuum, check for blocked suction line or strainer or air leak in suction piping.

Low Flow — Generally Check for:

1. Clogged or restricted suction line.
2. Plugged or restricted filter.
3. Air leak in suction (bubbles issuing from return fittings).
4. Pump operating under speed (low voltage)
5. Plugged or restricted impeller.

Noisy Pump — Check for:

1. Air leak in suction causing cavitation in pump.
2. Cavitation due to restricted or undersized suction line and unrestricted discharge lines. Correct suction condition or throttle discharge lines, if practical.
3. Vibration due to improper mounting, etc.
4. Foreign matter in pump housing.
5. Motor bearings made unserviceable by wear, rust or continual overheating.

TROUBLESHOOTING

Water Blaster Pump - 30-765

PROBLEM	POSSIBLE CAUSE	SOLUTION
<ul style="list-style-type: none"> • NO PRESSURE • VERY LITTLE PRESSURE • PRESSURE DROPS BELOW WORKING RANGE WHEN RELIEF VALVE IS OPEN TO BOOM OR SPRAY GUN 	Plugged strainer* restricting flow	Clean screen.
	Suction hose obstruction	Clear obstruction.
	Collapsed suction hose inside or outside tank restricting flow	Replace collapsed hose.
	Pump drawing air through suction line hoses or fittings.	Examine hoses and fittings, ensure air tight fit and no leaks.
	Pressure relief valve stuck or worn	Repair or replace relief valve.
	Excessive tank foam due to low tank volume	Refill tank.
	Nozzle volume is greater than pump capacity	Check relief valve adjustment. Reduce nozzle orifice size or number of nozzles used.
	One or more check valves seating improperly	Clean or replace check valves.
<ul style="list-style-type: none"> • PRESSURE GAUGE FLUCTUATES WILDLY • EXCESSIVE PULSATION 	Pulsation dampener pressure too low or too high	Adjust pulsation dampener pressure to 100 psi.
	Pump drawing air through suction line hoses or fittings	Examine hoses and fittings; ensure air tight fit and no leaks.
	Plugged strainer* restricting flow	Clean screen.
	Air not entirely evacuated from pump cavity	Run pump with an open discharge to totally evacuate air.
PUMP DOES NOT DRAW WATER	Pump drawing air through suction line hoses or fittings.	Examine hoses and fittings; ensure air tight fit and no leaks.
	Plugged strainer restricting flow	Clean screen.
	One or more check valves sealing improperly	Clean or replace check valves.
PUMP OIL HAS MILKY COLOR OR OIL PLUG POPS OUT	One or more diaphragms have ruptured	Replace diaphragms.

*NOTE: Only use filter screens that are between 10 & 20 mesh. Never use a fine filter screen with a diaphragm pump.

SPECIFICATIONS

MODEL	WATER BLASTER
	1.103-484.0 (230V)
	1.103-472.0 (460V)
DISCHARGE VOLUME	26 GPM
OPERATING PRESSURE	500 PSI
MOTOR	10 HP
PUMP	Diaphragm Pump
ELECTRICAL	NEMA 4, Mag Starter
NET WEIGHT	600 lbs.
VOLTAGE & AMPERAGE	230V, 3 PH, 30A 460V, 3 PH, 15A



LIMITED NEW PRODUCT WARRANTY WASH WATER / WATER TREATMENT SYSTEMS

WHAT THIS WARRANTY COVERS

All *WATER MAZE* water treatment systems are warranted by to the original purchaser to be free from defects in materials and workmanship under normal use, for the periods specified below. This Limited Warranty, subject to the exclusions shown below, is calculated from the date of the original purchase, and applies to the original components only. Any parts replaced under this warranty will assume the remainder of the part's warranty period. A 60 day grace period will be given for installation.

ONE YEAR PARTS AND 30 DAY LABOR WARRANTY:

All components excluding normal wear items as described below.

WARRANTY PROVIDED BY OTHER MANUFACTURERS:

Motors, which are warranted by their respective manufacturers, are serviced through these manufacturers' local authorized service centers. *WATER MAZE* cannot provide warranty on these items.

WHAT THIS WARRANTY DOES NOT COVER

This warranty does not cover the following items:

1. Normal wear items, such as seals, filters, gaskets, O-rings, packings, pistons, brushes, filtering media, ozone bulbs, sensors, UV scanners, oil-skimmer belt, impedance sensor. Minor leaks covered first time on original start-up only.
2. Damage or malfunctions resulting from accidents, abuse, modifications, alterations, incorrect installation, improper servicing, failure to follow manufacturer's maintenance instructions, or use of the equipment beyond its stated usage specifications as contained in the operator's manual.
3. Damage due to freezing, sludge build-up, chemical deterioration (oxidation, chloride or fluoride corrosion), and rust.
4. Damage to components from fluctuations in electrical or water supply.
5. Normal maintenance service, including adjustments.
6. Transportation to service center, field labor charges, or freight damage.
7. Consumables and water quality.

WHAT YOU MUST DO TO OBTAIN WARRANTY SERVICE

While not required for warranty service, we request that you register your *WATER MAZE* Product by returning the completed registration card. In order to obtain warranty service on items warranted by *WATER MAZE*, you must return the product to your Authorized *WATER MAZE* Dealer, freight prepaid, with proof of purchase, within the applicable warranty period. If the product is permanently installed, you must notify your Authorized *WATER MAZE* Dealer of the defect. Your Authorized *WATER MAZE* Dealer will file a claim with *WATER MAZE*, who must subsequently verify the defect. In most cases, the part must be returned to *WATER MAZE* freight prepaid with the claim. For warranty service on components warranted by other manufacturer's, your Authorized *WATER MAZE* Dealer can help you obtain warranty service through these manufacturers' local authorized service centers.

LIMITATION OF LIABILITY

WATER MAZE'S liability for special, incidental, or consequential damages is expressly disclaimed. In no event shall *WATER MAZE'S* liability exceed the purchase price of the product in question. *WATER MAZE* makes every effort to ensure that all illustrations and specifications are correct, however, these do not imply a warranty that the product is merchantable or fit for a particular purpose, or that the product will actually conform to the illustrations and specifications. Our obligation under this warranty is expressly limited at our option to the replacement or repair at a service facility or factory designated by us, of such part or parts as inspection shall disclose to have been defective. **THE WARRANTY CONTAINED HEREIN IS IN LIEU OF ALL OTHER WARRANTIES, EXPRESS OR IMPLIED, INCLUDING ANY IMPLIED WARRANTY WATER QUALITY, MERCHANTABILITY OR FITNESS FOR A PARTICULAR PURPOSE ARE EXPRESSLY LIMITED TO THE DURATION OF THIS WARRANTY.** This warranty gives you specific legal rights and you may also have other rights which vary from state to state. *WATER MAZE* does not authorize any other party, including authorized *WATER MAZE* Distributors, to make any representation or promise on behalf of *WATER MAZE*, or to modify the terms, conditions, or limitations in any way. It is the buyer's responsibility to ensure that the installation and use of *WATER MAZE* products conforms to local codes. While *WATER MAZE* attempts to assure that its products meet national codes, it cannot be responsible for how the customer chooses to use or install the product. Some states do not allow limitations or exclusion or limitation of incidental or consequential damages, so the above limitation or exclusion may not apply to you.



Form #8.913-974.0 • Printed in U.S.A.