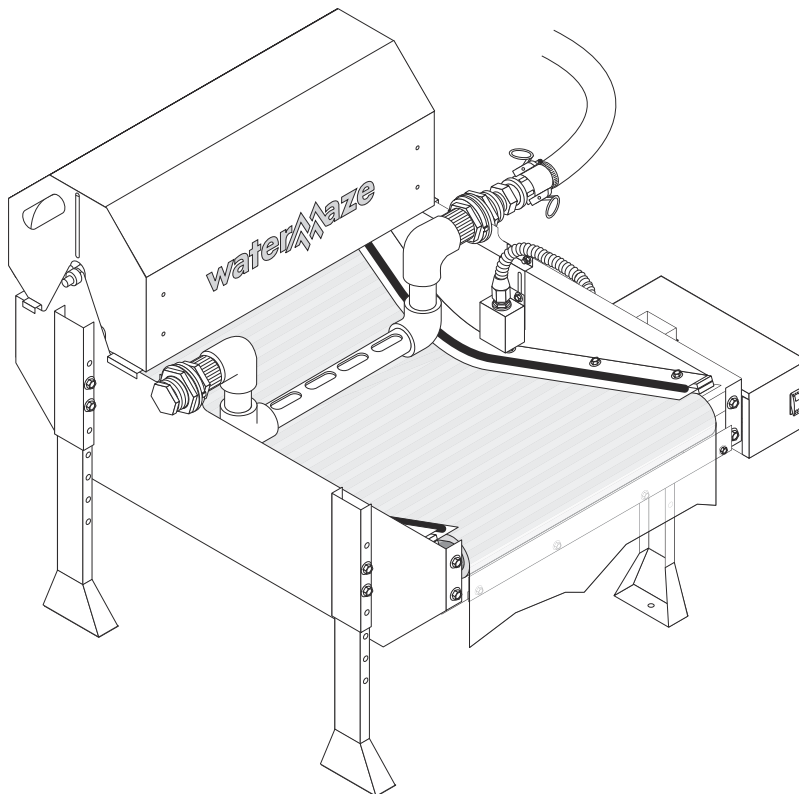


# Operator's Manual

## Water Treatment System

**MODELS: IPF2-20  
1.103-488.0**



For technical assistance or the  
Water Maze dealer nearest  
you consult our web page at  
**[www.wmaze.com](http://www.wmaze.com)**



## ***Machine Data Label***

---

Model: \_\_\_\_\_

Date of Purchase: \_\_\_\_\_

Serial Number: \_\_\_\_\_

Dealer: \_\_\_\_\_

Address: \_\_\_\_\_

Phone Number: \_\_\_\_\_

Sales Representative: \_\_\_\_\_

Machine Data Label . . . . .	2
Table of Contents . . . . .	3
How To Use This Manual . . . . .	4

**Safety**

Introduction & Safety Information . . . . .	5
Important Safety Information . . . . .	6
Grounding Instructions . . . . .	6
Ground Fault Circuit Interrupter Protection . . . . .	6

**Operations**

Application and Intended Use . . . . .	8
TCLP Testing: . . . . .	8
Site Preparation: . . . . .	8
Component Identification . . . . .	9
Installation & Operating Instructions . . . . .	10
Equipment and Supplies Needed for Installation . . . . .	10
Equipment Installation . . . . .	10
Start-Up . . . . .	10
Utility Usage . . . . .	10
Operating Environment . . . . .	10
Cold Weather . . . . .	10
Environmental . . . . .	10

**Maintenance**

Maintenance Instructions . . . . .	11
Daily Schedule: . . . . .	11

**Parts**

IPF2-20 . . . . .	14
Sump Pit. Option - 8.929-152.0 . . . . .	18

## How To Use This Manual

This manual contains the following sections:

- How to Use This Manual
- Safety
- Operations
- Maintenance
- Parts List

The HOW TO USE THIS MANUAL section will tell you how to find important information for ordering correct repair parts.

Parts may be ordered from authorized dealers. When placing an order for parts, the machine model and machine serial number are important. Refer to the MACHINE DATA box which is filled out during the installation of your machine. The MACHINE DATA box is located on the inside of the front cover of this manual.

Model:	_____
Date of Purchase:	_____
Serial Number:	_____
Dealer:	_____
Address:	_____
Phone Number:	_____
Sales Representative:	_____

The model and serial number will be found on a decal attached to the machine

The SAFETY section contains important information regarding hazardous or unsafe practices of the machine. Levels of hazards are identified that could result in product damage, personal injury, or severe injury resulting in death.

The OPERATIONS section is to familiarize the operator with the operation and function of the machine.

The MAINTENANCE section contains preventive maintenance to keep the machine and its components in good working condition. They are listed in this general order:

- Maintenance
- Troubleshooting

The PARTS LIST section contains assembled parts illustrations and corresponding parts list. The parts lists include a number of columns of information:

- **REF** – column refers to the reference number on the parts illustration.
- **PART NO.** – column lists the part number for the part.
- **QTY** – column lists the quantity of the part used in that area of the machine.
- **DESCRIPTION** – column is a brief description of the part.
- **NOTES** – column for information not noted by the other columns.

*NOTE: If a service or option kit is installed on your machine, be sure to keep the KIT INSTRUCTIONS which came with the kit. It contains replacement parts numbers needed for ordering future parts.*

*NOTE: The manual part number is located on the lower right corner of the front cover.*

## **Introduction & Safety Information**

Thank you for purchasing a *WATER MAZE*.

Your owner's manual has been prepared to provide you with a simple and understandable guide, for equipment operation and maintenance, based on the latest product information available at the time of printing. To keep your machine in top running condition follow the specific maintenance and troubleshooting procedures given in this manual. When ordering parts please specify model and serial number.

*WATER MAZE*, Inc. reserves the right to make changes at any time without incurring any obligation.

### **Owner/User Responsibility:**

The owner and/or user must have an understanding of the manufacturer's operating instructions and warnings before using this *WATER MAZE* machine. Warning information should be emphasized and understood. If the operator is not fluent in English, the manufacturer's instructions and warnings shall be read to and discussed with the operator in the operator's native language by the purchaser/owner, making sure that the operator comprehends its contents.

Owner and/or user must study and maintain for future reference the manufacturers' instructions.

### **SAVE THESE INSTRUCTIONS**

**This manual should be considered a permanent part of the machine and should remain with it if machine is resold.**

**When ordering parts, please specify model and serial number.**

### Important Safety Information



**WARNING:** When using this machine basic precautions should always be followed, including the following:

**AVERTISSEMENT:** En utilisant cette machine, des précautions de base devraient toujours être observées, y compris ce qui suit :

1. Read all the instructions before using the product.
2. To reduce the risk of injury, close supervision is necessary when a product is used near children.
3. Know how to stop the product quickly. Be thoroughly familiar with the controls.
4. Stay alert – watch what you are doing.
5. Do not operate the product when fatigued or under the influence of alcohol or drugs.
6. Keep operating area clear of all persons and animals.
7. Do not overreach or stand on unstable support. Keep good footing and balance at all times.
8. Follow the maintenance instructions specified in the manual.



**WARNING:** Wire the system for correct voltage. Refer to the information located on the serial plate.

**AVERTISSEMENT:** Raccorder le système au réseau électrique en respectant la tension. Se référer aux informations qui se trouvent sur la plaque signalétique.

**WARNING:** All wiring must be performed by a qualified electrician.

**AVERTISSEMENT:** Tout le câblage doit être effectué par un électricien qualifié.

**WARNING:** Risk of Electric Shock

**AVERTISSEMENT:** Risque de choc électrique

**DANGER:** Improper connection of the equipment-grounding conductor can result in a risk of electrocution. Check with a qualified electrician or service personnel if you are in doubt as to whether the outlet is properly grounded.

**DANGER:** Une mauvaise connexion du conducteur de terre de l'équipement peut entraîner un risque

d'électrocution. Vérifier auprès d'un électricien qualifié ou du personnel d'entretien si vous avez des doutes quant à savoir si la sortie est correctement mise à la masse.

### Grounding Instructions

This product must be connected to a grounded, metal, permanent wiring system; or an equipment-grounding conductor must be run with the circuit conductors and connected to the equipment-grounding terminal or lead on the product.

### Ground Fault Circuit Interrupter Protection

To comply with the National Electrical Code (NFPA 70) and to provide additional protection from the risk of electric shock, this machine should only be connected to a circuit protected by a ground fault circuit interrupter (GFCI).

9. Know the system application, limitations, and potential hazards.



**WARNING:** Do not use near concentrations of flammable or explosive fluids such as gasoline, fuel oil, kerosene, etc. Do not use in explosive atmospheres. Liquids compatible with component materials should only be used. Failure to follow this warning can result in personal injury and/or property damage.

**AVERTISSEMENT:** Ne pas utiliser près de concentrations de liquides inflammables ou explosifs tels que l'essence, le mazout, le kérosène, les solvants, etc. Ne pas utiliser dans des atmosphères explosives. Seuls des liquides compatibles aux matériaux des composantes devraient être utilisés. Le non-respect de cet avertissement peut mener à des lésions corporelles et/ou des dommages à la propriété.

10. The main power must be brought from the circuit breaker and wired into the electrical box on the IPF2-20. This line must be run through conduit to protect it from damage. A power disconnect should be located next to the machine for maintenance purposes.
11. Protect all electrical cords from sharp objects, hot surfaces, oil, sunlight, and chemicals. Avoid kinking the cords. Replace or repair damaged or worn cords immediately.
12. Never make adjustments on the machine while it is in operation.

13. Follow the maintenance instructions specified in this manual.
14. Before servicing the machine, refer to all the MSDS's on the material identified in the waste stream. You must comply with all warnings and wear all protective clothing as stated on the MSDS's.
15. Inlet water temperature must not exceed 85°F.
16. The best insurance against an accident is precaution and knowledge of the equipment.
17. *Water Maze* is not liable for modifications or use of components not purchased from *Water Maze*.



## 18. Personal Safety:

- a. Wear safety glasses and other applicable protective clothing at all times when working on this machine.

**Refer to item #14 under Important Safety Information.**

- b. Keep your work area clean, uncluttered and properly

lighted

- c. Keep visitors at a safe distance from work area.

19. Drain all liquids from the component before servicing.
20. Check hoses for weak or worn conditions before each use, making certain that all connections are secure.
21. Periodically inspect system components. Perform routine maintenance as required.
22. Do not touch an operating motor. Modern motors are designed to operate at high temperatures.
23. Do not touch any electrical component with wet hands, when standing on a wet or damp surface, or in water.



**WARNING: Protect machine from freezing.**

**AVERTISSEMENT: Protéger la machine contre le gel.**



**WARNING: Do not spray machine or any people, animals or electrical parts**

**AVERTISSEMENT: Ne pas vaporiser sur la machine ou les gens, les animaux ou les pièces électriques**

**WARNING: This system contains moving parts. Follow safe practices when performing maintenance and when troubleshooting. Disconnect**

**the power before servicing this machine. If the power disconnect is out of sight, lock it in the open position and tag it to prevent unexpected application of power.**

**AVERTISSEMENT: Ce système contient des pièces mobiles. Suivre les pratiques de sécurité au moment d'effectuer des opérations d'entretien et lors de la correction des erreurs. Débrancher l'alimentation avant d'effectuer des opérations d'entretien sur cette machine. Si le point de débranchement n'est pas visible, le mettre en position de circuit ouvert et bien l'identifier afin de prévenir une mise sous tension imprévue.**

**WARNING: If any cords or electrical wires appear to be frayed, damaged, or in poor condition, proceed with caution and immediately take steps to have the cords repaired or replaced.**

**AVERTISSEMENT: Si un cordon ou des fils électriques semblent effilochés, endommagés ou en mauvais état, agir avec prudence et prendre immédiatement des mesures afin que les cordons soient réparés ou remplacés.**

**WARNING: Make sure to take precautions when performing maintenance on the IPF2-20 and make sure electrical cords are well maintained.**

**AVERTISSEMENT: S'assurer de prendre les précautions nécessaires au moment d'effectuer des opérations d'entretien sur la IPF2-20 et s'assurer que les cordons électriques sont bien entretenus.**

### Application and Intended Use

#### IPF2-20 Water Treatment Unit:

The IPF2-20 can be installed as a component of a system that incorporates multiple water treatment technologies. In certain applications the constituents in the water may require additional pre-treatment or post treatment of the fluid stream. The IPF2-20 is effective in removing a wide range of constituents from water including:

- Oils (emulsified and free-oils)
- Suspended solids
- Heavy metals

As in all water treatment technologies, and without additional complementary technologies, the IPF2-20 has its limitations. It does not and/or is less effective in removing the following from industrial waste water:

- Dissolved solids: (i.e., salts, sugars, etc.)
- Some miscible liquids: (i.e., milk and water)
- Chelated solutions (e.g., metal ions held in solution using chemical agents) – typically found in metal plating applications
- Water soluble liquids (i.e., machining coolants)

To assure the best processed water quality, pretreatment of the waste water should be applied to address the following waste water characteristics:

- Heavy solids: Excessive amounts of heavy solids (especially solids that quickly fall out) should be removed prior to entering the IPF2-20 system.
- Free-oils (oils that are floating on the surface of the water): Although the IPF2-20 will typically address both free-oils and emulsified oils, excessive amounts of free-oils should be removed prior to entering the EC system.
- pH of the water: Typically, the IPF2-20 system performs best when the pH of the influent waste water is between 6 and 8. If the pH is outside these limits, pH adjustment will be necessary. Consult Water Maze for recommendation.
- Post-treatment: Subject to the application requirements, additional water treatment may be required.

***Consult a Water Maze representative prior to combining the IPF2-20 with other pre-treating and post treating equipment.***

### TCLP Testing:

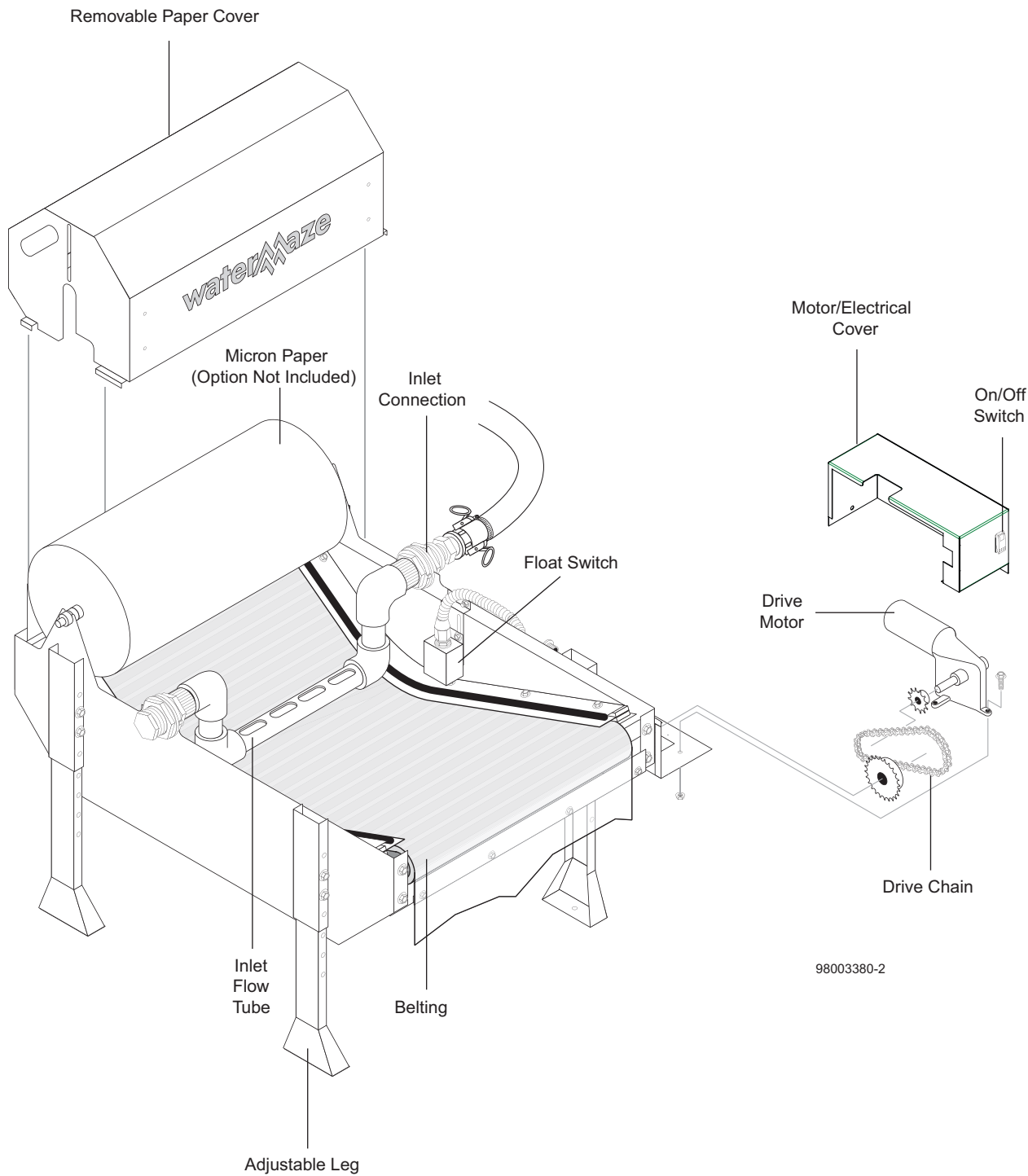
TCLP is one of the Federal EPA test methods that are used to characterize waste as either hazardous or non-hazardous for the purpose of disposal. TCLP is an acronym for Toxicity Characteristic Leaching Procedure. A TCLP test may be required prior to disposal of your solid waste. Consult a Water Maze representative for details.

### Site Preparation:

The installation site surface should be of compacted materials, such as concrete, asphalt or pavement and capable of supporting the IPF2-20 treatment system.



**Component Identification**



### Installation & Operating Instructions

The following instructions will provide adequate information to fully install your Water Maze IPF2-20 System. Please follow these instructions step by step to ensure proper installation.

### Equipment and Supplies Needed for Installation

Aside from having a general assembly of tools on hand, you will need to supply a few additional items to complete the installation of your system.

- Forklift
- Tape Measure
- Level
- Chalk

### Equipment Installation

The model IPF2-20 water treatment system must be installed on a level surface.

**If surface is not level, shimming may be required.**

### Installation Checklist

- ? Are all piping and electrical float switches connected as shown on the "Water Panel View"
- ? Is electrical wiring connected as shown on the Electrical Connection Diagram?
- ? Is the voltage correct?

### Start-Up

1. Make sure that all equipment is level.
2. Attach incoming water hose to connection located on side of polishing filter.
3. Connect electrical power to control panel: When connecting to the power supply, follow all electrical and safety codes as well as the most recent National Electric Code (NEC) and Occupational Safety and Health Act (OSHA). Ground system before connecting to the power supply.

**WARNING: All wiring must be performed by a qualified electrician.**

**AVERTISSEMENT: Tout le câblage doit être effectué par un électricien qualifié.**

### Utility Usage

Electrical: 120 Volts, 3 Amps

### Operating Environment

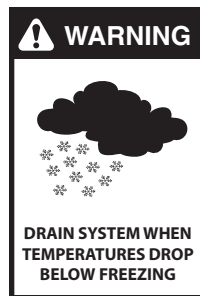
The IPF2-20 is designed to work in a wide variety of operating conditions. In normal operating environments, the system should perform as specified. In extremely hot or cold environments certain precautions need to be taken.

### Operating Conditions

Air Temperature Range: 40° - 120°F

Water pH: 6.0 - 8.0

### Cold Weather



Protect The IPF2-20 from damage that can occur when freezing water expands. Freezing water may cause pipes to burst.

Drain all pipes if a prolonged hard freeze is expected. Make sure all valves are open so water can completely drain from the system.

### Environmental

To reduce deterioration of equipment it is recommended that the IPF2-20 Water Treatment System be protected from environmental elements such as rain, snow, hail, direct sunlight, as well as freezing temperatures.

1. Remove the metal paper cover.
2. Remove the two 5/8" collars from one side to the paper axle.
3. Slide the axle into the paper roll. Re-attach the two 5/8" collars.
4. Lift the paper roll onto the U-shape brackets on the tank assembly.  
*NOTE: The paper MUST roll off to the backside of the IPF.*
5. Loosen the 5/8" collars to align and center the paper over the conveyor belt and tighten the collars.

*NOTE: The outer collars are to be located to the outside of each U-shaped bracket.*

6. Unroll approximately two feet of paper. Fold over a 3 inch section and crease on the loose end. **NOTE:** paper **MUST** go around the paper guide bar located just above the conveyor belt (back of IPF).
7. From the back of the unit, work one side of the folded paper section under the white paper guide that rides on top of the grey conveyor belt. Insert one inch under the white paper guide, then do the same procedure on the other side.
8. With the machine wired up, turn on the power switch. Move to the right hand side to the IPF. With the right hand, press down in the middle of the paper that is on the conveyor belt to keep the paper aligned under the white paper guides. With the left hand, lift up on the liquid level switch located under the metal float switch cover. This will cause the conveyor belt to index forward.
9. Once the paper had indexed to the end of the conveyor belt, let the float drop.
  - If needed, realign to center the paper that is under the white paper guides.
  - Reattach the metal paper cover.

## **Maintenance Instructions**

Daily and weekly maintenance is important for your system to function consistently and properly. Maintenance frequency depends on many factors, such as usage, volume of sludge, etc. On-site personnel should be trained and be aware of the daily and weekly maintenance that is required to meet these performance factors. We recommend the following:

### **Daily Schedule:**

#### **(Performed by customer personnel)**

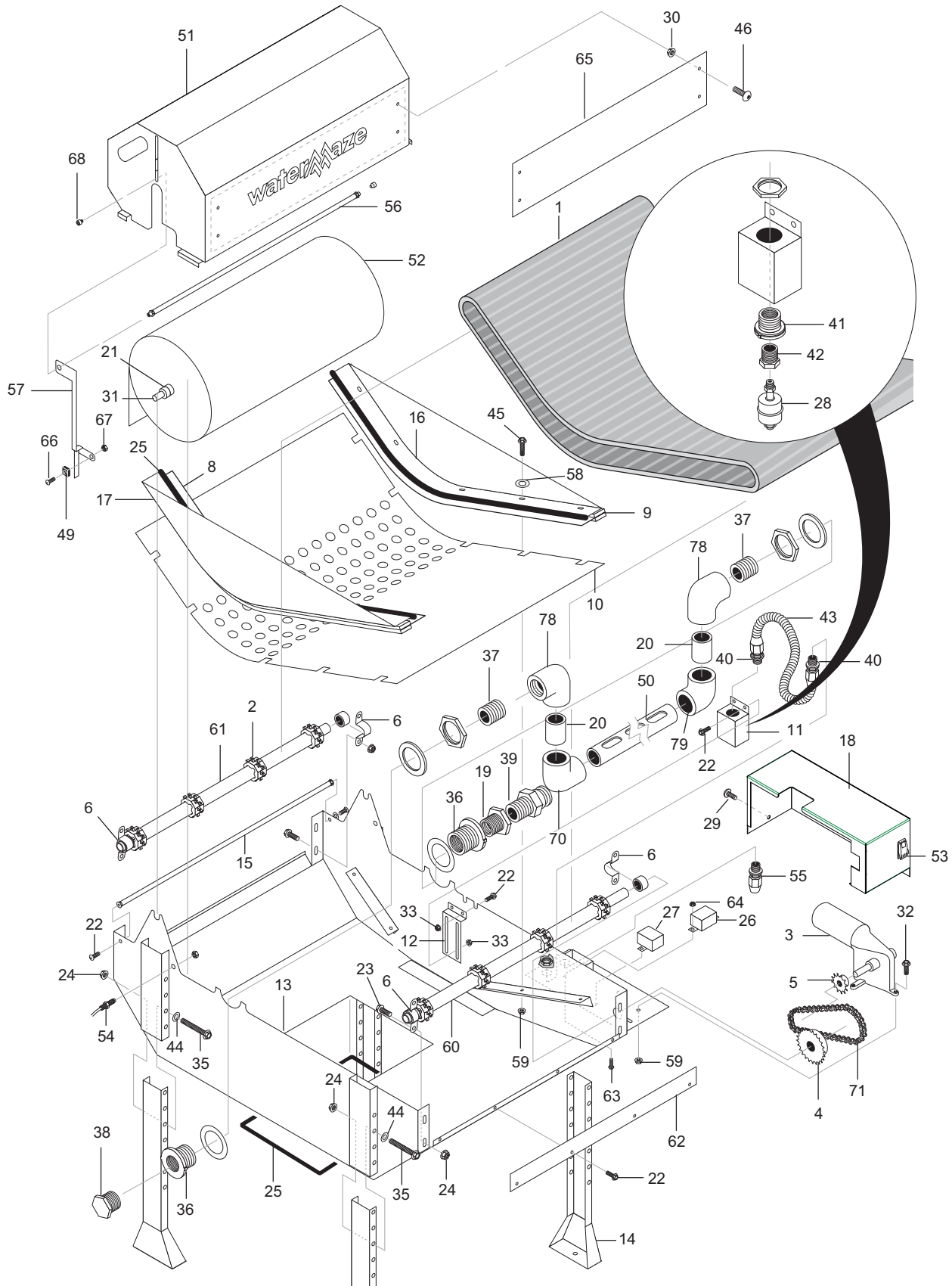
1. Become familiar with the IPF2-20 and make sure the electrical switch is in the ON position. When the switch is in the ON position, your system can operate automatically.
2. While operating the system, observe and repair any water leaks.



# **Parts**

## **Water Maze Water Treatment System**

**1.103-488.0 IPF2-20**



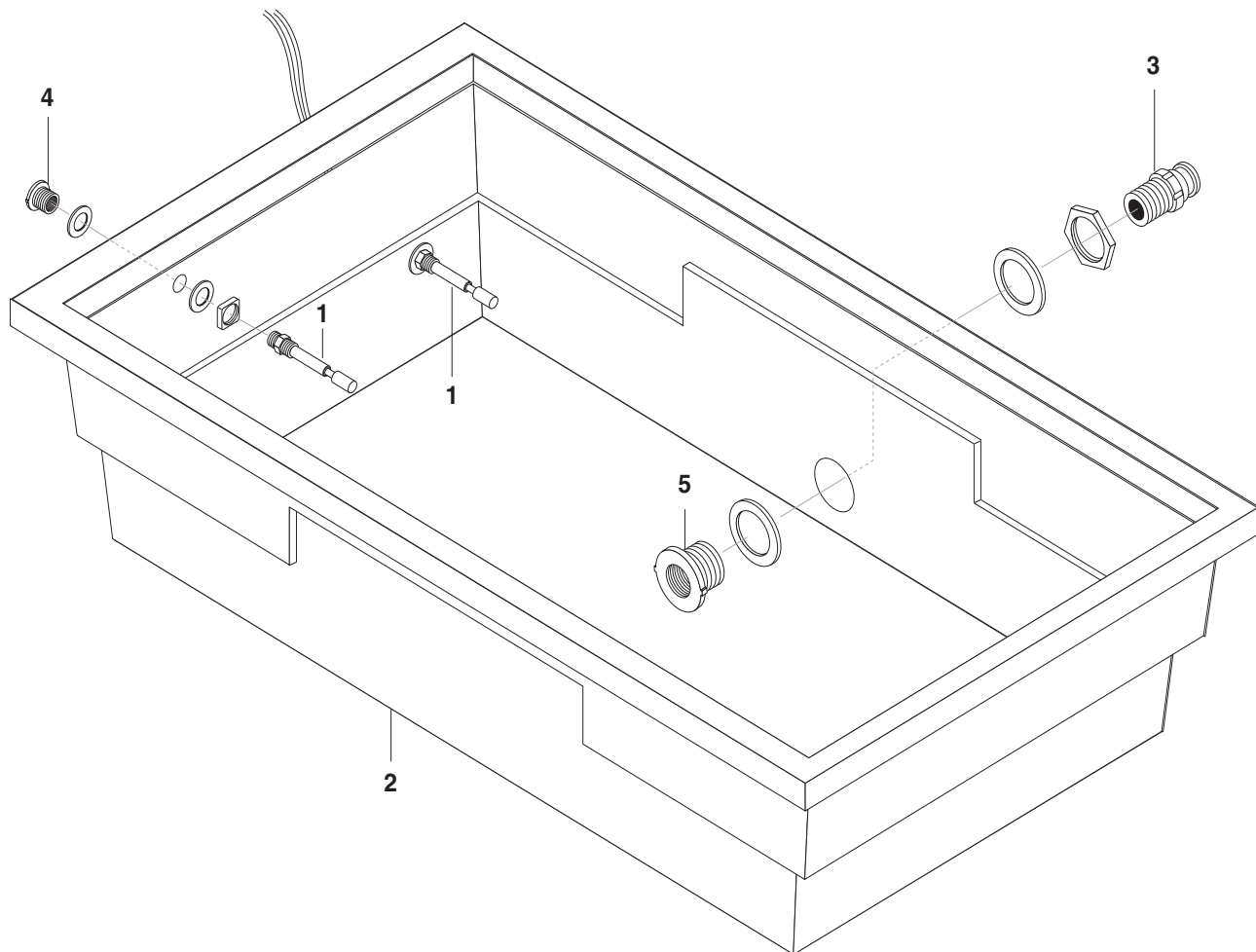
REF	PART NO.	QTY	DESCRIPTION	NOTES
1	8.749-948.0	1	BELTING, 1" PITCH, CONVEYER, PLASTIC	
2	8.749-949.0	8	SPROCKET, 1" PITCH, 2.6 DIAM X 1" BORE	
3	8.759-769.0	1	MOTOR 90 DEGREE 1/9 HP	
4	8.749-952.0	1	SPROCKET, DRIVE BELT	
5	8.759-770.0	1	SPROCKET MOTOR 20 TEETH 5/8 BORE	
6	8.749-954.0	4	BEARING, UHMW S.S. BASE MOUNTED	
7	8.749-956.0	1	LINK, CHAIN, SINGLE STRAND	NOT SHOWN
8	8.749-957.0	2	GUIDE, PAPER, TANK, MICRON FP	
9	8.749-958.0	4	SPACER, GUIDE, BELT, UHMW	
10	8.916-851.0	1	FILTER PAN, TANK ASSY, MICRON FP	
11	8.916-902.0	1	BRACKET, FLOAT SWITCH	
12	8.916-903.0	1	ADJUSTABLE BRACKET, FLOAT SWITCH	
13	8.916-853.0	1	WLMT, TANK, MICRON FP	
14	8.929-151.0	4	ASSEMBLY LEG TALL IPF	
15	8.916-855.0	1	WLMT, GUIDE, TANK, MICRON FP	
16	8.916-856.0	1	WLMT, RIGHT, SPLASH PAN, MICRON FP	
17	8.916-857.0	1	WLMT, LEFT, SPLASH PAN, MICRON FP	
18	8.916-858.0	1	WLMT, COVER, MOTOR, MICRON FP	
19	8.706-403.0	1	BUSHING, 2" X 1-1/2" MT X-FT, PVC 80, SPEARSO	
20	8.706-583.0	1.042 ft	PIPE, 2" GRAY, PVC 80"	CUT TO FIT
21	9.802-782.0	4	COLLAR, 5/8" BORE	
22	9.802-754.0	10	SCREW, 1/4" X 1/2" HH, NC, WHIZ LOC	
23	9.802-720.0	8	BOLT, 3/8" x 1", NC HH	
24	9.802-781.0	16	NUT, 3/8" WHIZ	
25	9.802-072.0	2.916 ft	TRIM, 6100 B3 X 1/16" A. W/SPONGE	
26	8.716-088.0	1	RELAY, 120V-5A SPDT	
27	8.759-801.0	1	CAPACITOR 12.5 MFD 250V	
28	8.716-294.0	1	SWITCH, LIQUID LEVEL, M-5000	
29	9.803-277.0	3	SCREW, 5/16" X 1/2", WHIZ LOC	
30	9.802-778.0	4	NUT, 5/16"-18	
31	8.911-371.0	1	AXLE, 5/8" X 31.625"	
32	8.718-603.0	4	BOLT, 1/4-20 X 3/4", HH SS	
33	9.802-775.0	4	NUT, 1/4" FLANGE, ZN	
34	9.802-510.0	6	CABLE, TIE, 4" BLACK	NOT SHOWN
35	9.802-733.0	8	BOLT, 3/8" X 3-1/2"	
36	8.706-479.0	2	BULKHEAD, 2" NPT, POLYPRO	
37	8.706-466.0	2	NIPPLE, 2" CLOSE	
38	8.706-395.0	1	PLUG, 2" PVC 80"	
39	8.707-169.0	1	ADAPTER, 1.5" MALE X 1.5" MALE THRD C	

REF	PART NO.	QTY	DESCRIPTION	NOTES
40	8.716-547.0	2	CONNECTOR, 1/2" L/T, STRAIGHT, BLACK	
41	8.750-743.0	1	BULKHEAD, 1/2" POLYPRO	
42	8.706-914.0	1	BUSHING, 1/2' X 1/8' PIPE	
43	9.802-448.0	2.5 FT	CONDUIT,WTR. TIGHT,FLEX,1/2 100'/BOX	
44	9.802-807.0	16	WASHER, 3/8", SAE, FLAT ZIN	
45	8.731-131.0	10	BOLT, 1/4-20 X 1-3/4", TAP SS	
46	9.803-541.0	4	SCREW, 5/16"-18 X 1/2" CS SOC BH NC ZN	NOT SHOWN
47	8.716-216.0	1	FUSE HOLDER	NOT SHOWN
48	8.716-714.0	1	FUSE 2.5 AMP	NOT SHOWN
49	9.804-120.0	1	MAGNET, REED SENSOR TARGET	
50	8.750-629.0	1	PIPE, MACHINED, 2" GRAY PVC	
51	8.917-157.0	1	WLMT, PAPER COVER	
52	8.719-179.0	1	TUB, BLACK SLUDGE, RECTANGULAR W/LID	NOT SHOWN
53	9.802-451.0	1	SWITCH, ROCKER, CARLING W/GREEN LENS	
54	9.804-119.0	1	SWITCH, MAGNETIC SENSOR, NC (SUPPLIED FOR COAG 2-20/EC2-20)	
55	9.802-514.0	1	STRAIN RELIEF, 1/2"	
56	8.917-360.0	1	SWITCH, ROD	
57	8.917-154.0	1	BRACKET, LEFT	
58	8.718-965.0	10	WASHER, 1/4", FLAT, SAE, SS	
59	8.718-817.0	14	NUT, 1/4" X 20	
60	8.917-039.0	1	WLMT, AXLE, FRONT	
61	8.917-040.0	1	WLMT, AXLE, REAR	
62	8.725-517.0	1	SCRAPER, FILTER	
63	9.802-749.0	3	SCREW, 8/32" X 3/4"	
64	9.802-785.0	4	NUT, 8/32"	
65	8.917-155.0	1	CUTOUT BACKGROUND	
66	8.731-134.0	2	SCREW, 4-40	
67	8.718-847.0	2	NUT, 4-40	
68	8.725-548.0	2	BOLT, SHLDR 5/16"	
69	8.756-409.0	4	CONNECTOR, LEVER NUT, 2-WIRES	NOT SHOWN
70	8.706-382.0	2	ELBOW, 2" S X S	
71	8.749-955.0	13"	CHAIN, SINGLE STRAND	
72	8.716-517.0	4	DISCONNECT, FEMALE	NOT SHOWN
73	8.716-473.0	1	CONNECTOR, BUTT	NOT SHOWN
74	9.804-069.0	4	DISCONNECT, FEMALE	NOT SHOWN
75	8.716-377.0	2	TERMINAL RING	NOT SHOWN



REF	PART NO.	QTY	DESCRIPTION	NOTES
76	8.712-861.0	0.52 ft	EDGE TRIM	NOT SHOWN
77	9.802-073.0	2.104ft (25.5")	WEATHERSTRIP	NOT SHOWN
78	8.706-384.0	2	ELBOW, 2" S X T	
79	8.756-410.0	2	CONNECTOR, LEVER NUT, 3-WIRES	NOT SHOWN
80	9.804-071.0	1	DISCONNECT, FEM FULLY INS .250, YELLOW	NOT SHOWN

## **Sump Pit. Option - 8.929-152.0**



REF	PART NO.	QTY	DESCRIPTION	NOTES
1	8.725-513.0	2	SWITCH, LEVEL	
2	8.929-164.0	1	TANK BLACK 82 GAL WITH HOLES	
3	8.707-169.0	1	ADAPTER, 1.5 MALE X 1.5	
4	8.750-743.0	2	BULKHEAD, 1/2" PVC	
5	8.706-490.0	1	BULKHEAD, 1-1/2" POLYPRO	





## LIMITED NEW PRODUCT WARRANTY WASH WATER / WATER TREATMENT SYSTEMS

### WHAT THIS WARRANTY COVERS

All *WATER MAZE* water treatment systems are warranted by to the original purchaser to be free from defects in materials and workmanship under normal use, for the periods specified below. This Limited Warranty, subject to the exclusions shown below, is calculated from the date of the original purchase, and applies to the original components only. Any parts replaced under this warranty will assume the remainder of the part's warranty period. A 60 day grace period will be given for installation.

### ONE YEAR PARTS AND 30 DAY LABOR WARRANTY:

All components excluding normal wear items as described below.

### WARRANTY PROVIDED BY OTHER MANUFACTURERS:

Motors, which are warranted by their respective manufacturers, are serviced through these manufacturers' local authorized service centers. *WATER MAZE* cannot provide warranty on these items.

### WHAT THIS WARRANTY DOES NOT COVER

This warranty does not cover the following items:

1. Normal wear items, such as seals, filters, gaskets, O-rings, packings, pistons, brushes, filtering media, ozone bulbs, sensors, UV scanners, oil-skimmer belt, impedance sensor. Minor leaks covered first time on original start-up only.
2. Damage or malfunctions resulting from accidents, abuse, modifications, alterations, incorrect installation, improper servicing, failure to follow manufacturer's maintenance instructions, or use of the equipment beyond its stated usage specifications as contained in the operator's manual.
3. Damage due to freezing, sludge build-up, chemical deterioration (oxidation, chloride or fluoride corrosion), and rust.
4. Damage to components from fluctuations in electrical or water supply.
5. Normal maintenance service, including adjustments.
6. Transportation to service center, field labor charges, or freight damage.
7. Consumables and water quality.

### WHAT YOU MUST DO TO OBTAIN WARRANTY SERVICE

While not required for warranty service, we request that you register your *WATER MAZE* Product by returning the completed registration card. In order to obtain warranty service on items warranted by *WATER MAZE*, you must return the product to your Authorized *WATER MAZE* Dealer, freight prepaid, with proof of purchase, within the applicable warranty period. If the product is permanently installed, you must notify your Authorized *WATER MAZE* Dealer of the defect. Your Authorized *WATER MAZE* Dealer will file a claim with *WATER MAZE*, who must subsequently verify the defect. In most cases, the part must be returned to *WATER MAZE* freight prepaid with the claim. For warranty service on components warranted by other manufacturer's, your Authorized *WATER MAZE* Dealer can help you obtain warranty service through these manufacturers' local authorized service centers.

### LIMITATION OF LIABILITY

*WATER MAZE'S* liability for special, incidental, or consequential damages is expressly disclaimed. In no event shall *WATER MAZE'S* liability exceed the purchase price of the product in question. *WATER MAZE* makes every effort to ensure that all illustrations and specifications are correct, however, these do not imply a warranty that the product is merchantable or fit for a particular purpose, or that the product will actually conform to the illustrations and specifications. Our obligation under this warranty is expressly limited at our option to the replacement or repair at a service facility or factory designated by us, of such part or parts as inspection shall disclose to have been defective. **THE WARRANTY CONTAINED HEREIN IS IN LIEU OF ALL OTHER WARRANTIES, EXPRESS OR IMPLIED, INCLUDING ANY IMPLIED WARRANTY WATER QUALITY, MERCHANTABILITY OR FITNESS FOR A PARTICULAR PURPOSE ARE EXPRESSLY LIMITED TO THE DURATION OF THIS WARRANTY.** This warranty gives you specific legal rights and you may also have other rights which vary from state to state. *WATER MAZE* does not authorize any other party, including authorized *WATER MAZE* Distributors, to make any representation or promise on behalf of *WATER MAZE*, or to modify the terms, conditions, or limitations in any way. It is the buyer's responsibility to ensure that the installation and use of *WATER MAZE* products conforms to local codes. While *WATER MAZE* attempts to assure that its products meet national codes, it cannot be responsible for how the customer chooses to use or install the product. Some states do not allow limitations or exclusion or limitation of incidental or consequential damages, so the above limitation or exclusion may not apply to you.



9.800-338.0 • Printed in U.S.A.